

## VIPA 300S (Ethernet)

### HMI Setting:

Parameters	Recommended	Options	Notes
PLC type	VIPA 300S (Ethernet)		
PLC I/F	Ethernet		
Port no.	102		
PLC sta. no.	1	0-31	

### Device Address:

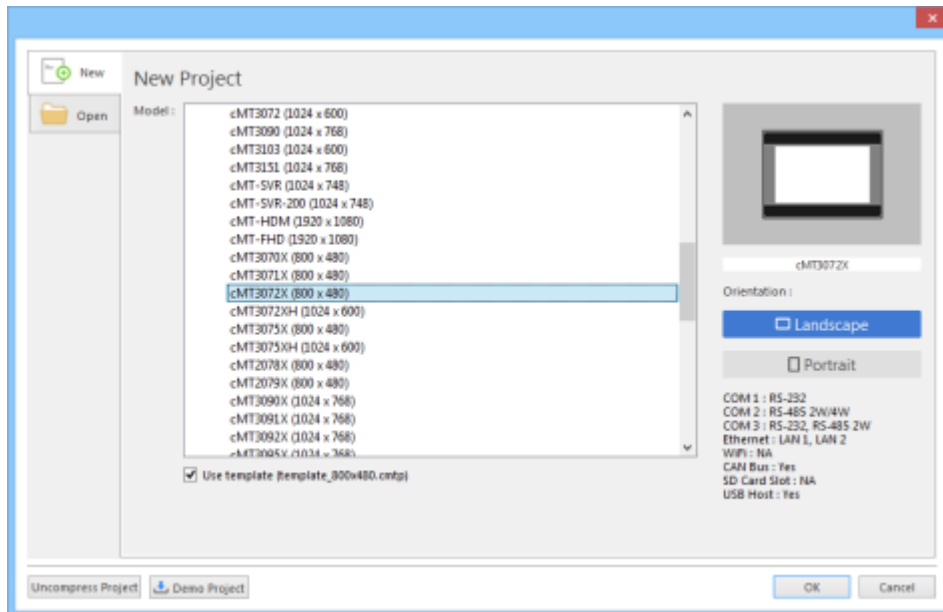
Bit/Word	Device type	Format	Range	Memo
B	I	DDDDo	0 ~ 40957	Input (I)
B	Q	DDDDo	0 ~ 40957	Output (O)
B	M	DDDDo	0 ~ 40957	Bit Memory
B	DBnBit	FFFFFFDDDDo	0 ~ 6553599997	
B	DBxBit	FFFFFFDDDDDo	0 ~ 10700655357	
B	DB0Bit-DB99Bit	DDDDDo	0 ~ 655357	Data Register Bit
W	IW	DDDD	0 ~ 4095	Input (I)
W	QW	DDDD	0 ~ 4095	Output (O)
Byte	MB	DDDD	0 ~ 4095	Bit Memory Byte
W	MW	DDDD	0 ~ 4095	Bit Memory
DW	MD	DDDD	0 ~ 4094	
Byte	DBBn	FFFFFFDDDD	0 ~ 655359999	
Byte	DBBx	FFFFFFDDDDDD	0 ~ 1070065535	
W	DBn	FFFFFFDDDD	0 ~ 655359999	Data Register
W	DBx	FFFFFFDDDDDD	0 ~ 1070065535	(must be even)
DW	DBDn	FFFFFFDDDD	0 ~ 655359999	Data Register Double
DW	DBDx	FFFFFFDDDDDD	0 ~ 1070065535	Word (must be multiple of 4)
W	DBn_String	FFFFFFDDDD	0 ~ 655359999	
W	DBx_String	FFFFFFDDDDDD	0 ~ 1070065535	
W	DBn_String1	FFFFDDDD	0 ~ 40969999	
W	DBx_String1	FFFFFFDDDDDD	0 ~ 1070065535	
DW	DBDn_String	FFFFFFDDDD	0 ~ 655359999	

Bit/Word	Device type	Format	Range	Memo
DW	DBDx_String	FFFFFFDDDD	0 ~ 1070065535	
W	DB0 ~ DB99	DDDD	0 ~ 65535	Data Register

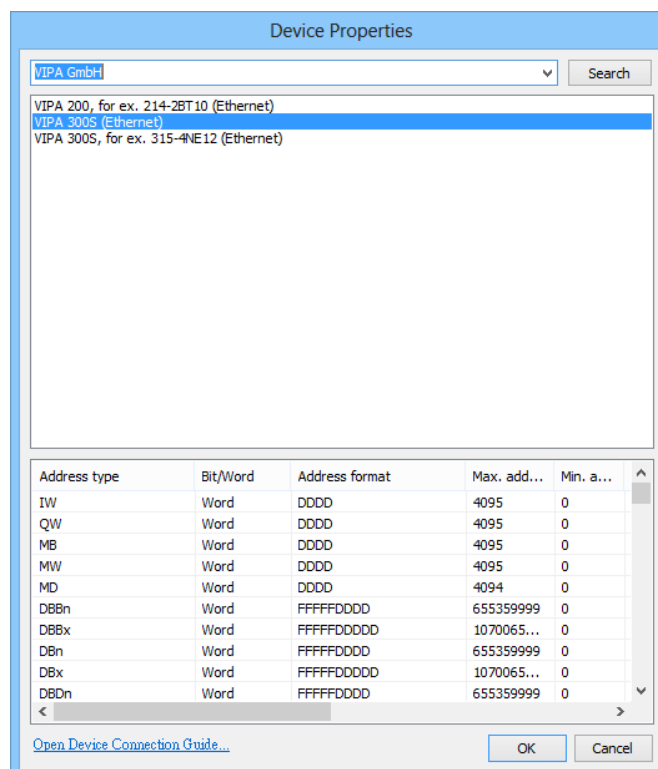
\* Double word and floating point value must use DBDn device type.

## EasyBuilder Device Setting Steps

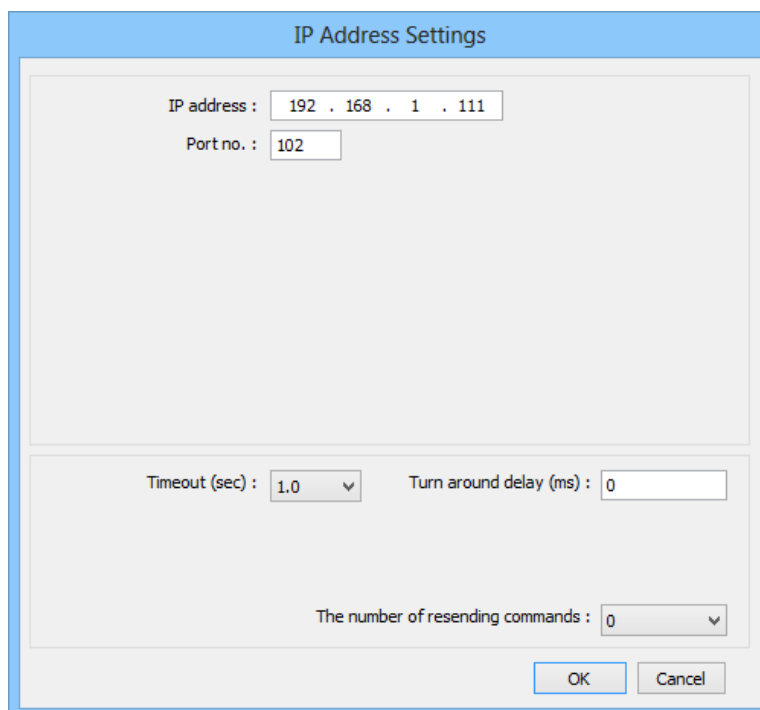
1. Open EasyBuilder, File/NEW, select HMI model and press **[OK]**.



2. "System Parameter Settings" window is shown, click **[New Device/Server]**.
3. Select "VIPA 300S (Ethernet)".



4. Press **[Settings]**.
5. Set IP address, Port no



**IP Address Settings**

IP address : 192 . 168 . 1 . 111

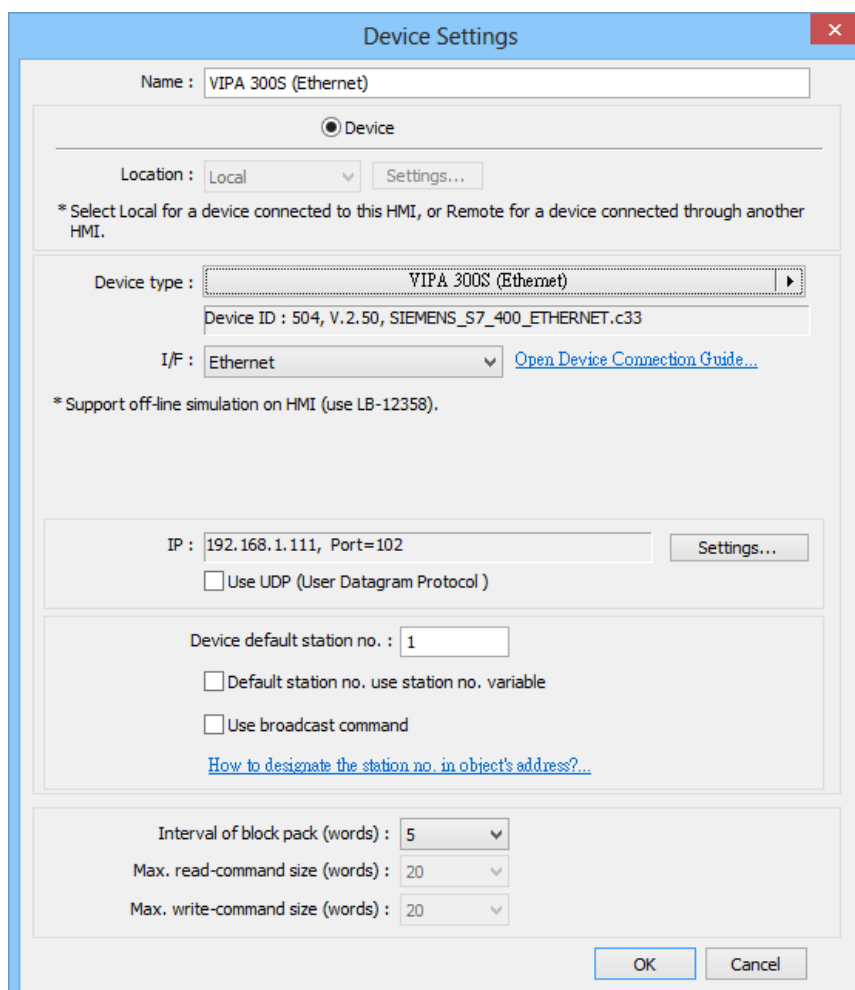
Port no. : 102

Timeout (sec) : 1.0      Turn around delay (ms) : 0

The number of resending commands : 0

OK      Cancel

6. The setting will be finished as below.



**Device Settings**

Name : VIPA 300S (Ethernet)

Device

Location : Local      Settings...

\* Select Local for a device connected to this HMI, or Remote for a device connected through another HMI.

Device type : VIPA 300S (Ethernet) ▶

Device ID : 504, V.2.50, SIEMENS\_S7\_400\_ETHERNET.c33

I/F : Ethernet      [Open Device Connection Guide...](#)

\* Support off-line simulation on HMI (use LB-12358).

IP : 192.168.1.111, Port=102      Settings...

Use UDP (User Datagram Protocol)

Device default station no. : 1

Default station no. use station no. variable

Use broadcast command

[How to designate the station no. in object's address?...](#)

Interval of block pack (words) : 5

Max. read-command size (words) : 20

Max. write-command size (words) : 20

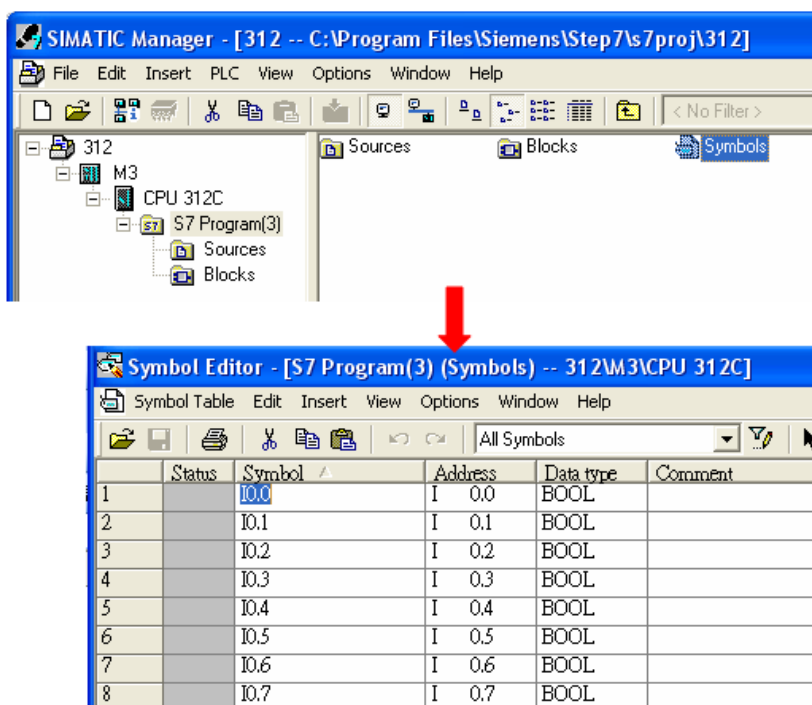
OK      Cancel

## How to Import Tag:

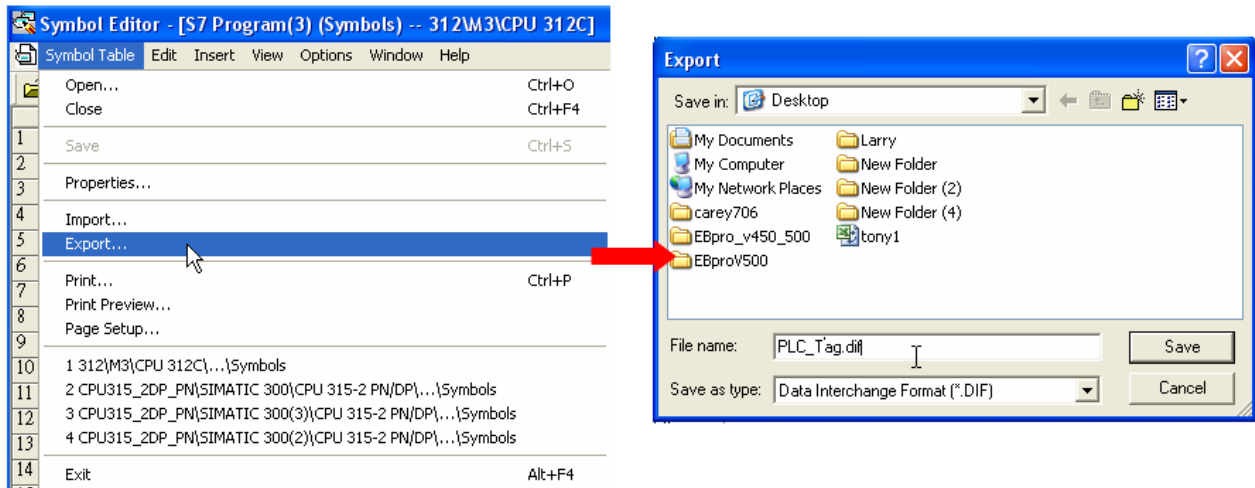
SIEMENS STEP 7 program allows building files of user-defined tag (\*.dif file and \*.AWL file), and import these files in EasyBuilderPro -> System Parameter Settings. The following describes how to build and import these two types of files.

### 1. Building \*.dif File

- a. In "Symbols" create user-defined tag.

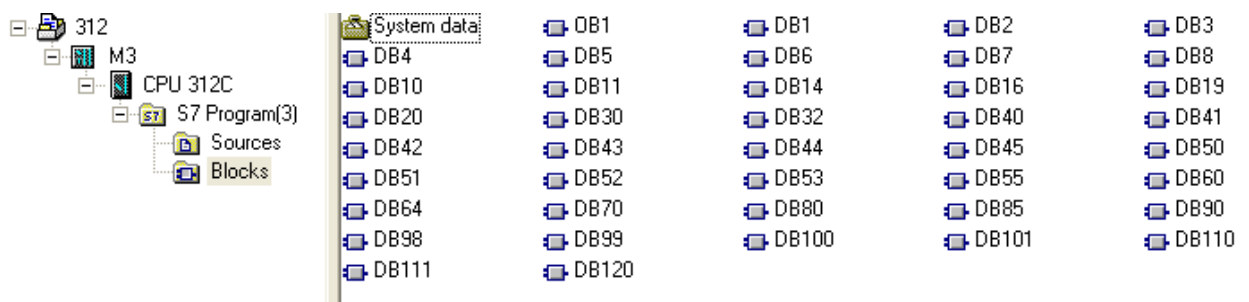


b. Click **Export** to export the edited file and click **Save**.

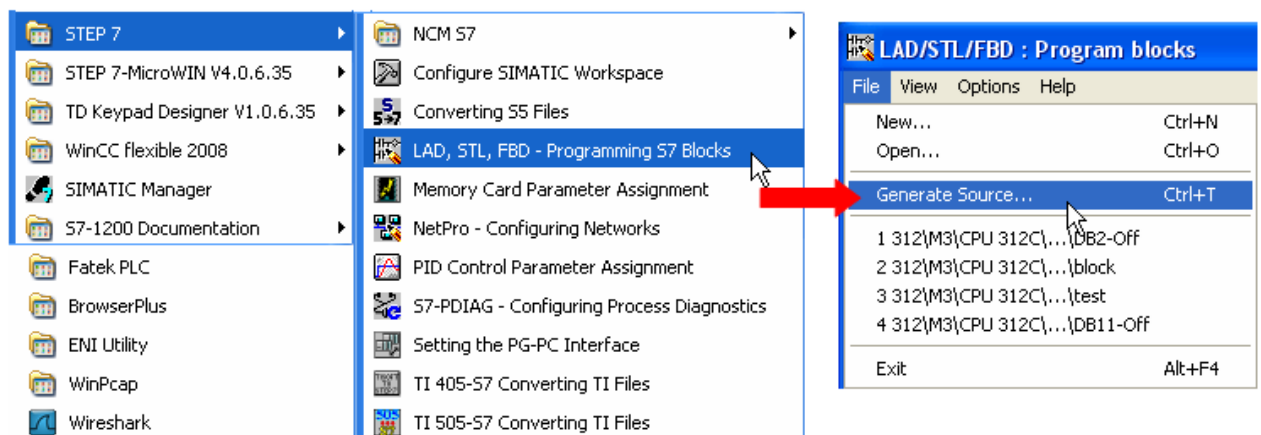


## 2. Building \*.AWF File

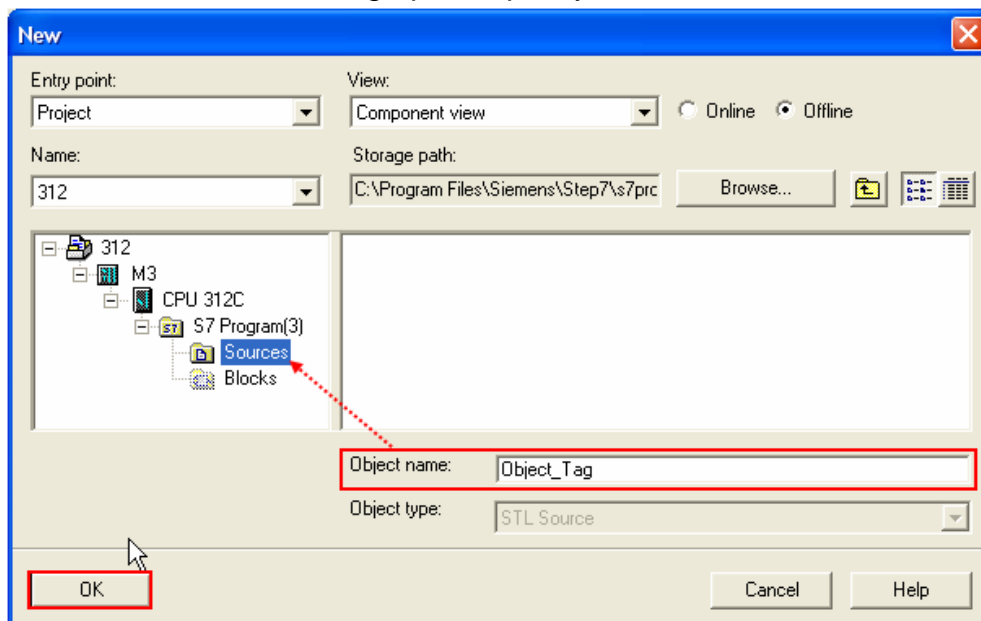
a. In **Blocks** create items as shown below:



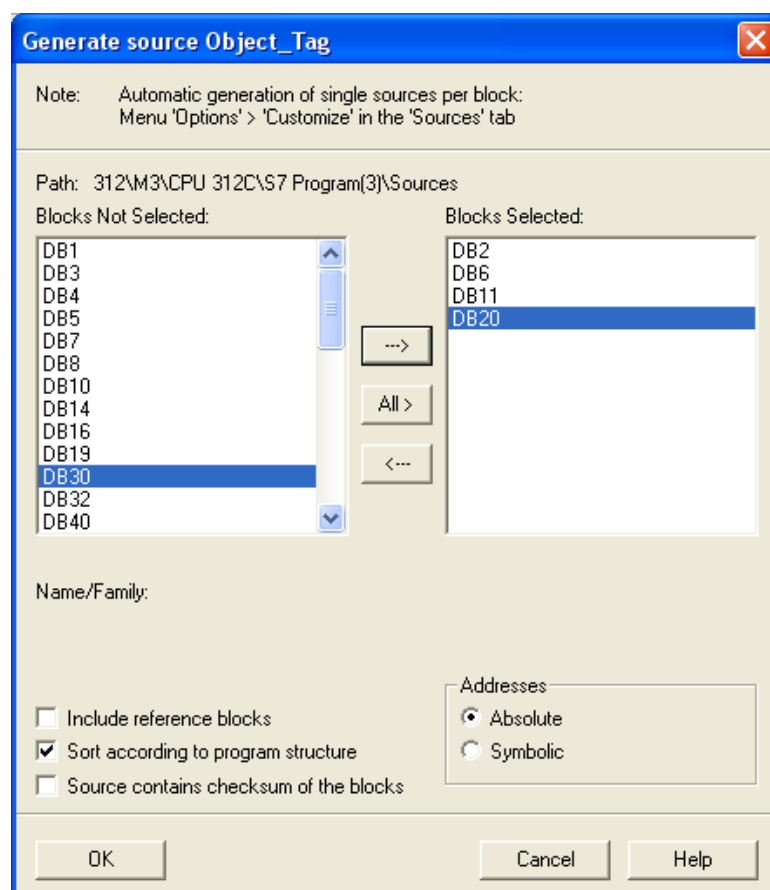
b. Open LAD/STL, FBD – Programming S7 Blocks, click **File** -> **Generate Source**.



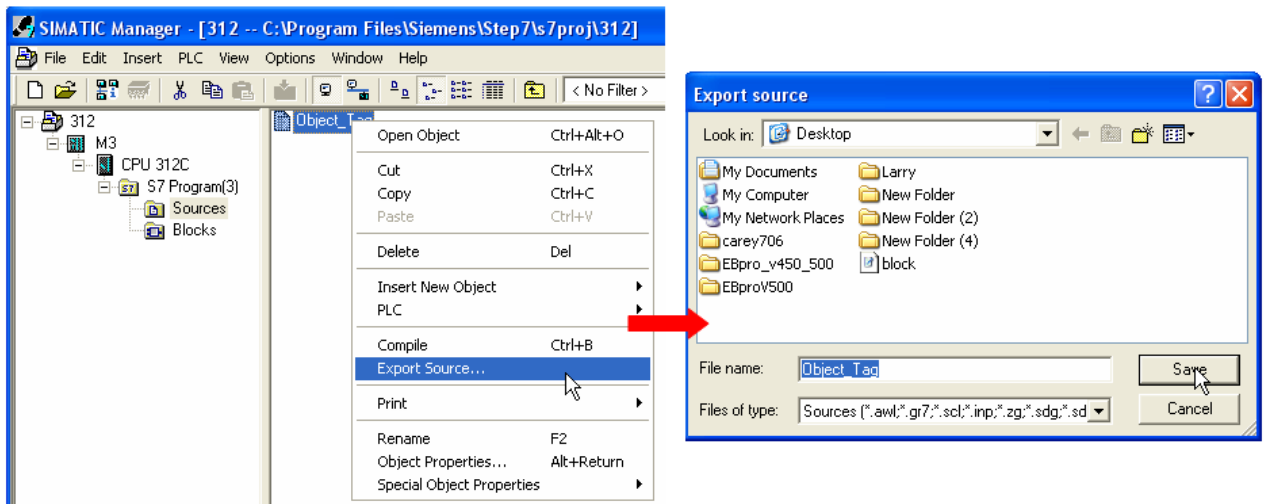
c ․ Select **Sources** as storage path, specify the file name then click **OK**.



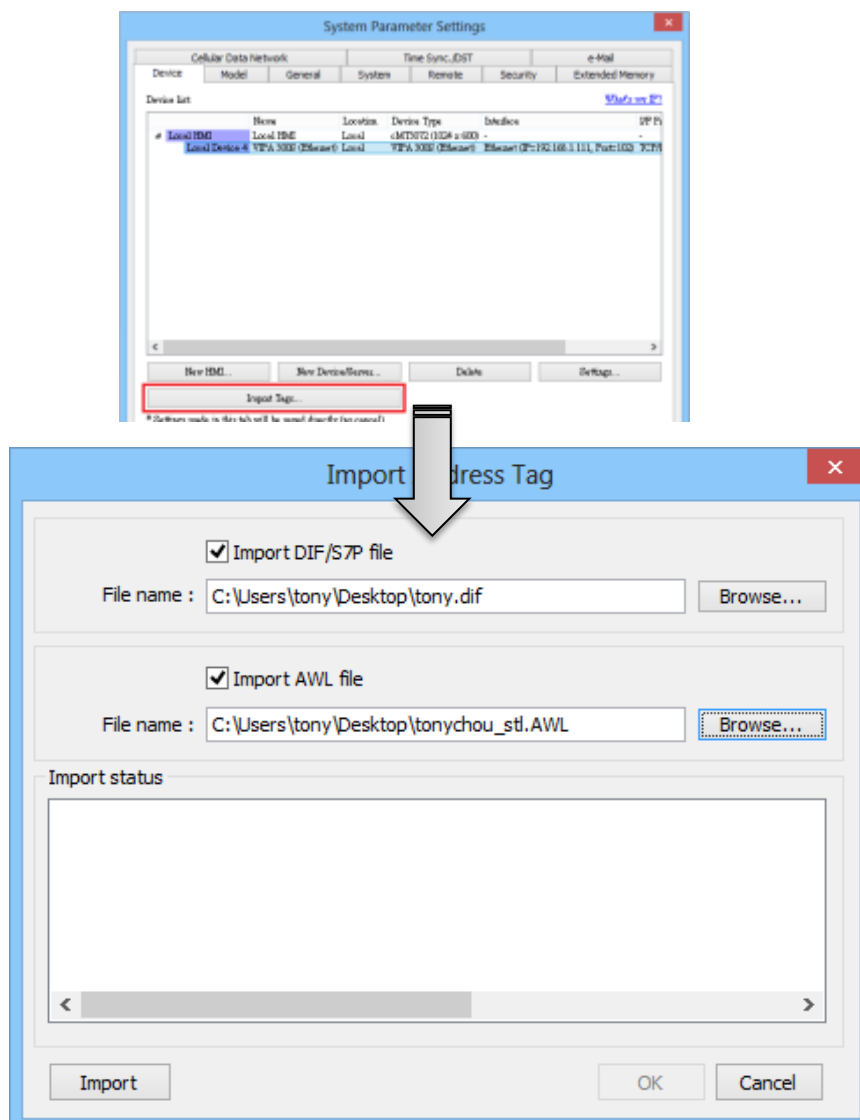
d ․ Select the objects to be exported then click **OK**.



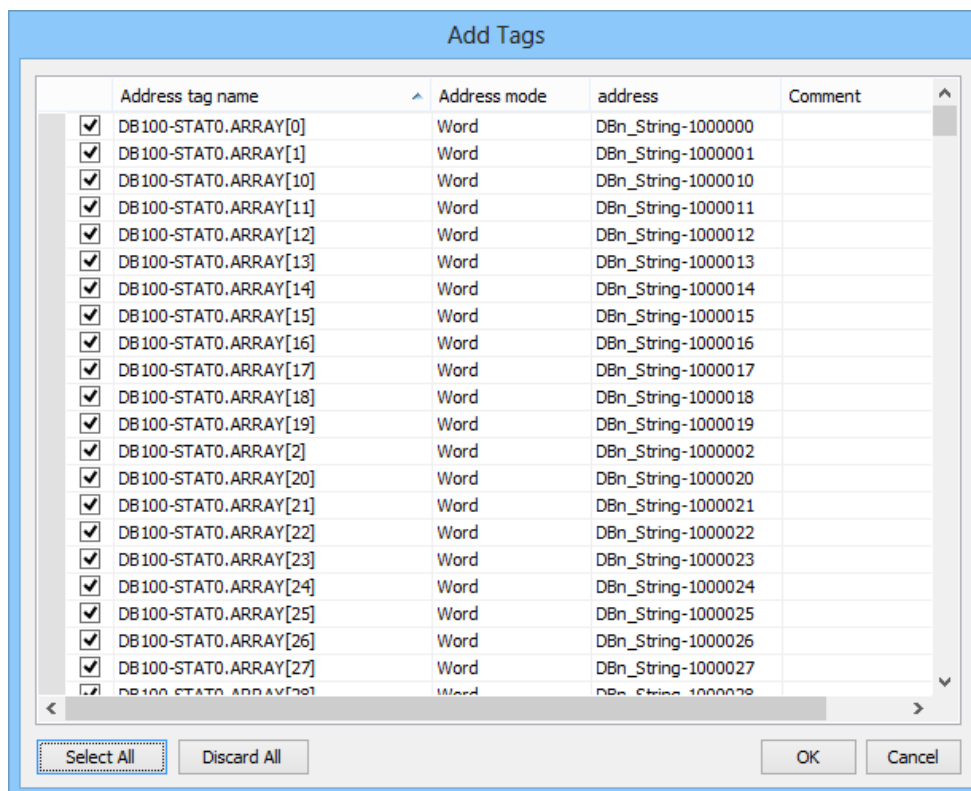
- e、 Under **Sources** there will be names of the saved files, select **Export Source** to build \*.AWL file.



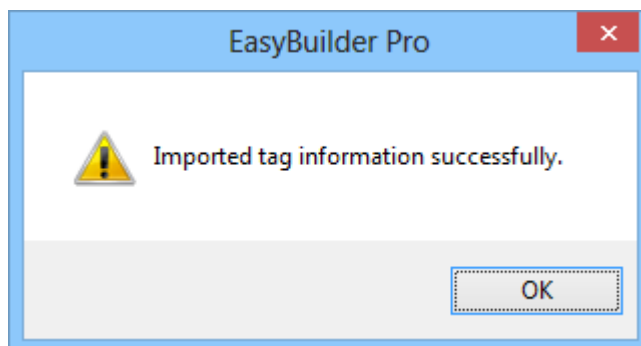
The generated \*.DIF/S7P and \*.AWL files can be imported in EasyBuilderPro **System Parameter Settings**, by clicking **Import Tag**.



Select the tag to import



Tag information successfully imported.



## Wiring Diagram:

Ethernet cable:

